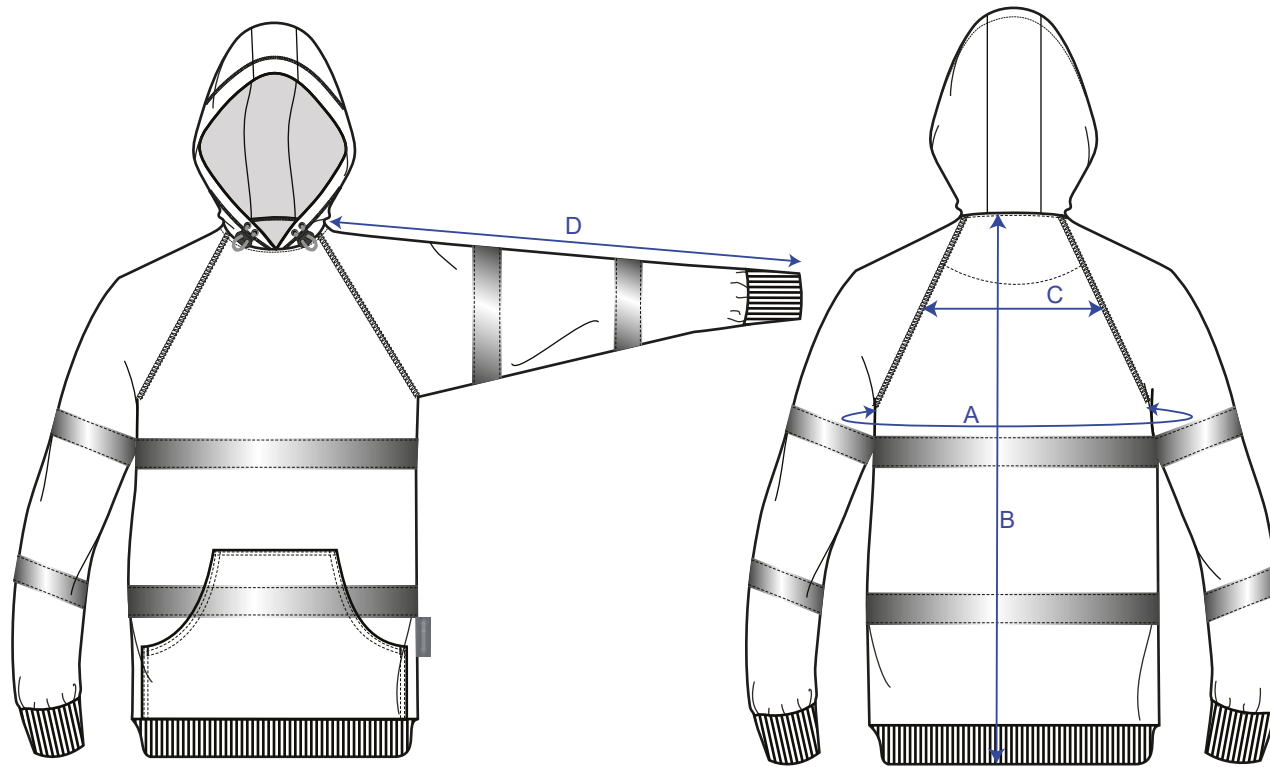


STYLE NO: B316

DESCRIPTION: Hi Visibility Hoodie

FABRIC: 65% Polyester, 35% Cotton

COLOUR: Yellow, Orange



The Measurements Are For A Fully Relaxed Fabric, In Cm :										
	AREA	S	M	L	XL	XXL	3XL	4XL	5XL	Tol Plus
A	Chest	108	117	126	135	144	153	162	171	1
B	Back Length (incl.waistband)	75	76	76	76	76	77	77	78	1
C	Across Back (15cms down from neck)	36	38	40	42	44	46	48	50	0.5
D	Sleeve Length (Incl.collar & Cuff)	80	81	82	83	84	85	86	87	0.5